

**SPECIFICATION**

**A: MATERIAL:**

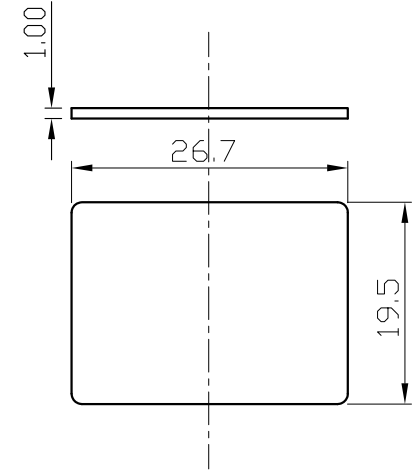
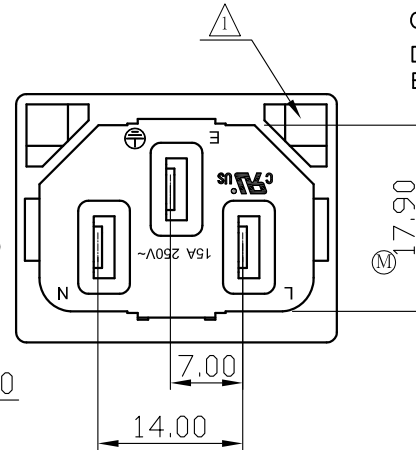
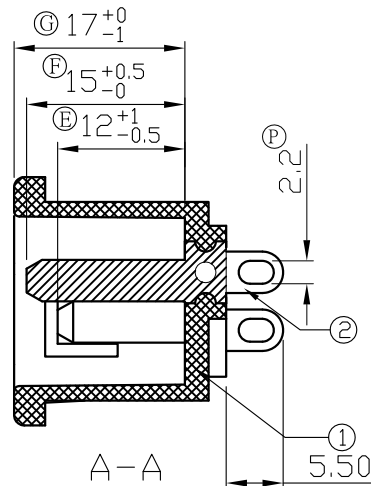
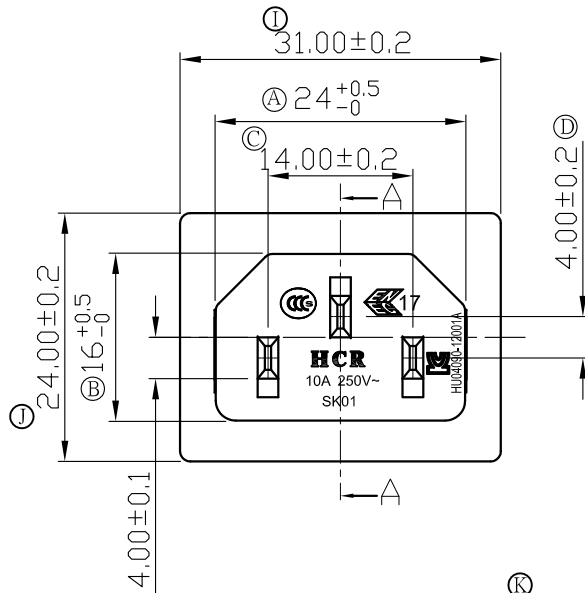
- 1.BODY: NYLON 66
- 2.TERMINAL: Cu PLATED Sn

**B: CHARACTERISTICS:**

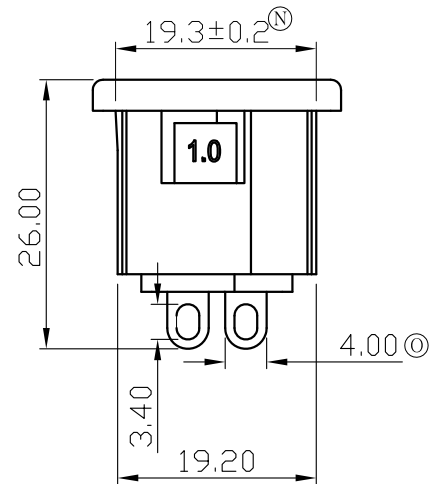
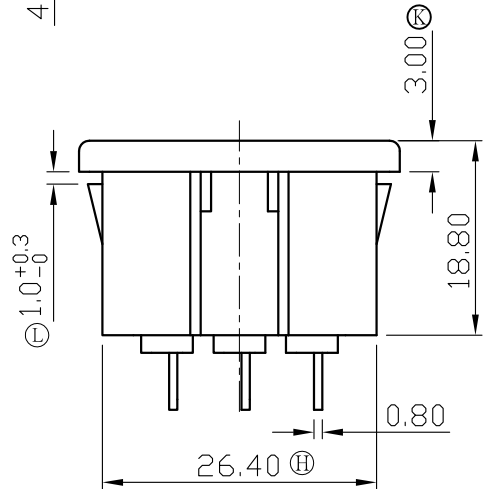
- 1.RATING: 15A 250V~(C-ULus)  
10A 250V~(ENEC & CCC & KC)
- 2.INSULATION RESISTANCE:100MΩ MIN,AT 500VDC
- 3.ELECTRIC STRENGTH : 3000 VAC/1MIN,LEAKAGE CURRENT UNDER 0.5mA

**C: APPROVALS: C-ULus, ENEC & CCC & KC**

- D: MATERIAL USED MUST BE COMPLY WITH HQI-0010
- E: CAN MEET ROHS,ROHS2.0,HF



**PANEL CUT-OUT**



TOLERANCES UNLESS OTHERWISE 未指定容許差尺寸之公差	
BASIC DIMENSIONS TOLERANCES	
UP TO 10 (10以下)	±0.15
ABOVE 10 TO 30(10~30)	±0.3
ABOVE 30 TO 100(30~100)	±0.5
ANGULAR DIMENSIONS(角度)	±5°
DIMENSION UNIT	mm

東莞市華之力電子有限公司 DONGGUAN HCR ELECTRONICS CO., LTD.

NO	DATE	REVISION DESCRIPTION	REVISION	DRAWN	APPROVED	繪圖 DRAWN BY	日期 DATE	路徑 DWG NO	E:\成品圖 \SK01\800044	料號 ITEM NO	機型 PART NAME
2						核准 APPROVED BY	日期 DATE	20111206	投影法 PROJECT		機型 PART NAME
1	2012/09/12	1.變更設計結構，做掏膠處理 2.修改尺寸公差	A1			校對 CHECKED BY	日期 DATE	20111206	比例 SCALE	1:1	機型 PART NO
0	2012/8/15	1.新制定	A0	WeiChen	AaronJin	繪圖 DRAWN BY	日期 DATE	20111206	路徑 DWG NO	E:\成品圖 SK01\800044	料號 ITEM NO
											INLET SOCKET
											SK01
											SK01-1601060621H